

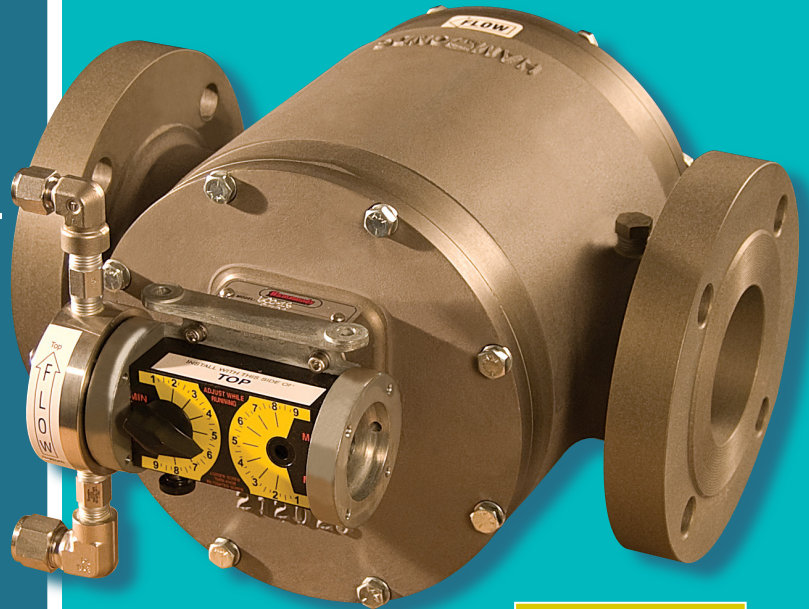
model 600

Refueler and Hydrant Injector...

- No outside power necessary
- Single or multiple additive injection
- Precision Blending

**Fluid
power**

Flow of the Fuel powers the Injector.
NO OUTSIDE POWER SOURCE NECESSARY



One of
Hammonds' most
popular units...

Model 600
(20-250 GPM)

SINGLE or MULTIPLE
Additive
Injection

The flow of fuel provides all the power needed to run the **Model 600** from Hammonds. No outside power source is necessary to run any of the Hammonds Fluid-Power units.

The **Model 600** is one of the most popular Hammonds injectors and offers single or multiple additive injection at flow rates (**20 to 250 gallons per minute**) typically found in aviation refuelers, hydrant systems, heating oil delivery trucks, dye injection and bulk receipt injection. The unique positive displacement drive responds precisely to changes in product volume even at very low rates. The additive is injected just ahead of the driver, providing complete, consistent additive blending.

- No power or meter required
- Proportionate to flow injection
- Even and accurate blending
- Responds accurately to low flow rate changes
- Can inject up to (4) additives at different injection ratios simultaneously
- Installs easily in small spaces
- 3" 150# RF connection standard
- **20-250 GPM**

PROPORTION to FLOW Additive Blending

As with all Hammonds Fluid-Power Injectors and Injection Systems, the flow of the fuel is the only power source that is necessary. No outside source is required. Because the injector is powered by the flow of fuel, a constant and accurate additive to fuel ratio is maintained. Faster fuel flow results in more additive being injected, and conversely, slower flow results in less additive being injected. This ensures that the correct injection to fuel rate remains in place throughout the process. In addition, the flow of fuel provides a blending of fuel to additive that is always even, accurate and thorough. Additive is never injected by "slugs" or "pulses" like some systems.

Hammonds[®]

Fluidpower

3-YEAR WARRANTY

Ask a Hammonds' Rep about our Extendable 3-Year warranty

INNOVATION—pure and simple

Hammonds[®]

6807 West Little York Road • Houston, Texas 77040 • (800) 582-4224



Truck-Mounted
Model 600

model 600

SINGLE or MULTIPLE Additive Injection

Cart-Mounted • Truck-Mounted
Fixed in Place

Fluid power

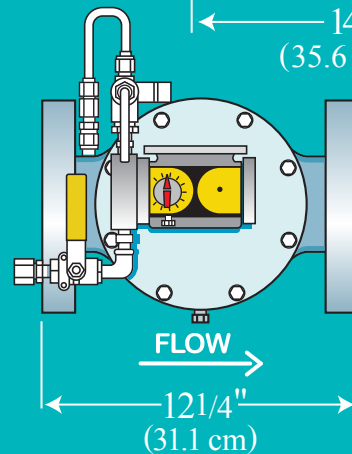
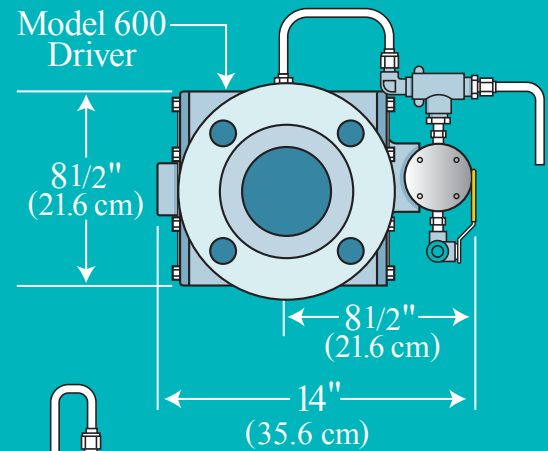
Flow of the Fuel powers the Injector.
NO OUTSIDE POWER SOURCE NECESSARY

SPECIFICATIONS

- Flooded suction required
- Number of additives: 1 standard, up to 4 optional
- 3" (7.6 cm) 150# connections standard (other connections available, consult factory for details)
- Injection ratios: 0-4000 PPM depending upon application
- 20-200 GPM (37.8-756.8 l) continuous operation
- 10-300 GPM (37.8-1,135.3 l) intermittent operation
- Product temperature range: -40° - +250°F (-4.4° - +121.1°C)
- Maximum product line pressure: 150 PSI
- Product viscosities: To 10,000 SSU
- Fuels, oils, additives and liquid gases
- Duty cycle: intermittent
- "Smart" monitoring package available

CONSTRUCTION MATERIALS

- Hard anodized aluminum or carbon steel
- Metering pump: All wetted parts 300 series stainless steel
- Elastomers: Aflas®, Viton® and Teflon®
- Mechanical Seal: Carbon on ceramic



Pump Models
may vary

*NOTE: Flow may be
different than shown.
Refer to flow arrow on driver.

- Cart-Mounted
- Truck-Mounted
- Fixed in Place

